

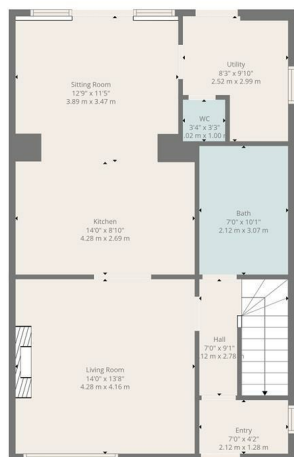


OFFERS OVER

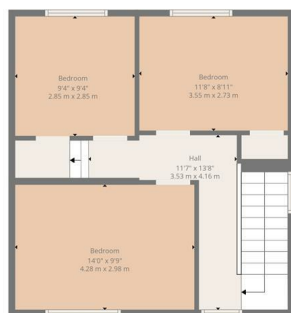
£159,995

Dimsdale Road

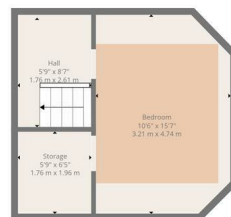
Wishaw, ML2 8DN



Ground Floor



1st Floor



2nd Floor



TOTAL: 1299 sq. ft, 120 m²
 Ground floor: 662 sq. ft, 61 m², 1st floor: 489 sq. ft, 45 m², 2nd floor: 148 sq. ft, 14 m²
 EXCLUDED AREAS: UTILITY: 68 sq. ft, 6 m², LOW CEILING: 80 sq. ft, 7 m², STORAGE: 23 sq. ft, 2 m²,
 WALLS: 132 sq. ft, 15 m²

Floor Plan Created By Cubicore App. Measurements Deemed Highly Reliable But Not Guaranteed.



Energy Efficiency Rating		
	Current	Potential
Very energy efficient - lower running costs		
(92 plus) A		
(81-91) B		
(69-80) C		
(55-68) D		
(39-54) E		
(21-38) F		
(1-20) G		
Not energy efficient - higher running costs		
Scotland	EU Directive 2002/91/EC	



Agents Note: Whilst every care has been taken to prepare these particulars, they are for guidance purposes only. All measurements are approximate and are for general guidance purposes only and whilst every care has been taken to ensure their accuracy, they should not be relied upon and potential buyers/tenants are advised to recheck the measurements



OFFICE ADDRESS
 376 Brandon Street
 Motherwell
 North Lanarkshire
 ML1 1XA

OFFICE DETAILS
 01698 263413
enquiries@hemmingshomes.co.uk
hemmingshomes.co.uk